

# Automated System for High Throughput PCR Setup



When carried out manually, the process of setting up PCR reactions can be just as costly, time consuming and prone to error as the DNA extraction itself.



Aurora Biomed Inc. offers the VERSA automated PCR set-up workstation, a pipetting workstation for high throughput and low volume applications. When processing a large number of reactions, the system is configured to provide high levels of reliability and standardization by eliminating repetitive reaction setup, liquid handling tasks and variations due to handling errors.

With this unit, highly reproducible PCR amplifications can be achieved with no detectable cross-contamination at reaction volumes as low as 1 $\mu$ L.

## APPLICATIONS

- Single and multiplex PCR Set-up
- Real time PCR
- Viral/Bacterial load
- Transcript levels
- Genomic studies
- Sequencing reaction set-up and clean-up
- PCR Clean-up
- Restriction Digestion Set-up

## FEATURES

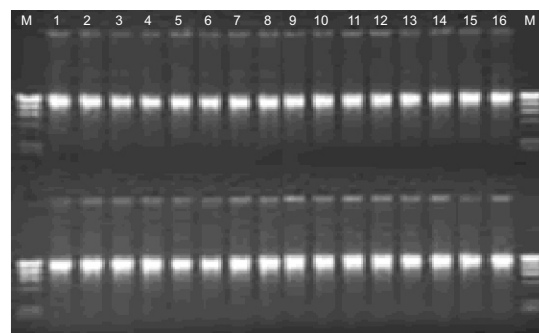
- High throughput, 1000 PCR reaction set-up/day
- High speed, accurate, contact-free delivery
- True aspirate and dispense capability
- User friendly software interface
- Hands-free process
- Micro-fuge tubes, 96 and 394-well compatible
- Normal volume to low (1 $\mu$ L) reaction volumes

## PERFORMANCE DETAILS

- Customized semi-automated high-throughput applications in micro-fuge tubes and 96-well formats for a wide range of sample types.
- Reproducible results between experiments through standardized sample preparation and reaction setup.
- Fast startup with optimized protocols for various PCR setup conditions.

## HARDWARE FEATURES

<b>Deck Configurations:</b>	8 deck positions <ul style="list-style-type: none"> <li>• 4 for 96-well plates</li> <li>• 3 for holding tip racks</li> <li>• 1 position for reagent block</li> </ul>
<b>Modules:</b>	DualHead SyringePipettor <ul style="list-style-type: none"> <li>• 20 <math>\mu</math>L syringe with tip changer</li> <li>• 1000 <math>\mu</math>L syringe with tip changer</li> </ul>
<b>Tips:</b>	20 $\mu$ L / 1000 $\mu$ L
<b>Software:</b>	VERSAware (PCR Set-up Version only)
<b>Pipetting Accuracy:</b>	CV values 2% at 1 $\mu$ L
<b>Volume Range:</b>	1 $\mu$ L to 1000 $\mu$ L
<b>Speed:</b>	Approx. 45 min for two 96-well PCR reactions set-up



PCR analysis of plasmid DNA using VERSA Mini PCR Set-up Workstation

## Aurora Biomed Inc.

1001 East Pender Street, Vancouver, BC  
V6A 1W2 Canada

Tel: (604) 215-8700 • Fax: (604) 215-9700  
Toll Free: 1-800-883-2918 [North America only]  
E-mail: [info@aurorabiomed.com](mailto:info@aurorabiomed.com)  
Website: [www.aurorabiomed.com](http://www.aurorabiomed.com)

# Liquid Handling